

ATLANTA HOMESTM & LIFESTYLES

HEART *of the* HOME

From Cozy to Splashy! Our Top
Cooking & Entertaining Spaces

JANUARY 2019
ATLANTAHOMESMAG.COM

\$5.95US



P3-6819

ERIN KEELER
1040 BOULEVARD SE STE C
ATLANTA GA 30312-3812

#BXNJPNM *****AUTO**SCH 5-DIGIT 30215 FSSD
#1100002348/1#



Contents

JANUARY 2019

HOME

- 54 **Art of the Edit**
Formal translates to fresh—and fun—in Suzé Surdyk Jones' judiciously layered new abode
- 60 **Common Thread**
For a 1930s Georgian last remodeled in the 1970s, interior designer Melanie Turner packs in the punch
- 70 **Classic Redux**
A young family with an abbreviated timeline puts their stamp on a 1930s home
- 78 **English Elegance**
Douglas W. Hilton gives the House of Hazen proprietress a haven that embraces her love for all things English

LIFE

- 46 **Real Estate** Property Report
48 **Calendar** Happenings this month
49 **Naomi** On small spaces
50 **Dish** Restaurant Holmes
96 **End Note** Suzanna on downsizing
6 **Editor's Letter**
95 **Ad Index**



STYLE

- 11 **Made for Living**
AH&L's 2019 Kitchen of the Year winners
- 36 **This Just In**
What's new and noteworthy in the kitchen-and-bath design world
- 42 **Educated Eye**
Gilt-y! Our preoccupation with a rich, gilded glow continues to reign



On the Cover

Interior Design by
MARK WILLIAMS DESIGN ASSOCIATES
Photography by
DAVID CHRISTENSEN
Styling by
YVONNE ORCHARD





winner

COSMO COOL

Mark Williams' modern redesign of a Plaza Towers kitchen nods to mid-century style

Styling by
YVONNE ORCHARD

Photography by
DAVID CHRISTENSEN

DESIGNER MARK WILLIAMS and his team walked a fine line between swanky and cheerful in the kitchen renovation of Jason Moattar's Plaza Towers condo in Buckhead.

The stylish homeowner wanted to transform the cramped galley kitchen to entertain in a more contemporary fashion. The layout changes were "basically everything," Williams notes. The first step was removing the wall between the existing kitchen and dining area to create a sense of openness. He then he broke the space into three zones: food prep at the waterfall-edge island, a pantry and a bar. The extension of the marble island drops down to table height, with room for six curved dining chairs rimmed in antique brass. The antique brass rods of Jean de Merry's Eclat chandelier define this new dining space with a showstopping element.

"Sometimes people think of functional and durable as mutually exclusive to beautiful. We don't think that way. Sometimes you can have it all if you plan properly," Williams says.

STYLE
NEWS



ARCHITECTURAL AND INTERIOR DESIGN Mark Williams Design Associates, (678) 539-6886; mw-da.com
CONTRACTOR Tidwell Construction CABINETRY Kamil Pricinsky, Pricinsky Custom MARBLE COUNTERTOPS Marmi Natural Stone PORCELAIN FLOOR TILE Daltile BACKSPASH TILE Crossville FAUCET Waterworks SINK Kohler APPLIANCES Bosch, Monogram LIGHTING Jean de Merry at R Hughes CHAIRS Interlude Home BLACK, WHITE AND GOLD PAINTING Steve McKenzie ONYX BOWL ON ISLAND Lush Life



The transitional interiors nod to Plaza Towers' iconic mid-century design. The dark honey hue of the original parquet floors throughout most of the condo drove the selection of the cabinetry color. "Every finish choice that we made at the onset of the primary design phase was in response to that parquet floor color," Williams says. Black porcelain floors with notes of iron and white veining contrast with the honey stain and offer durability.

To align the backsplash with mid-century sensibilities, Williams straight-stacked subway tile, whose matte finish creates a softer effect. With concealed appliances, open shelving and integrated finger pulls on the cabinets, Williams kept the design clean and further integrated the kitchen into the living space. "I didn't want it to scream, 'Hey, I'm a kitchen,'" he says.



winner

POLISHED WITH PIZZAZZ

Mallory Mathison Glenn and Brandon Ingram team up to create a bright, inviting hub for friends and family

Photography by
JEFF HERR

THE PLAN FOR A YOUNG family's new Milton home began with the kitchen. "The whole house grew from the kitchen sink," says architect Brandon Ingram. With a generous island, a bar, breakfast room and butler's pantry, the kitchen opens up into the family room and outdoor living space. With the layout set, Mallory Mathison Glenn coordinated with the homeowners to create a clean, classic palette of black, white, navy and brass.

"We worked hand-in-hand with these clients in designing every single element," Glenn says. "This kitchen and this home is such a reflection of them and their personal style."

Highlights such as an elegant lacquered bar, custom hood and interior steel window punctuate and enliven the open, airy kitchen, which drew inspiration from historic



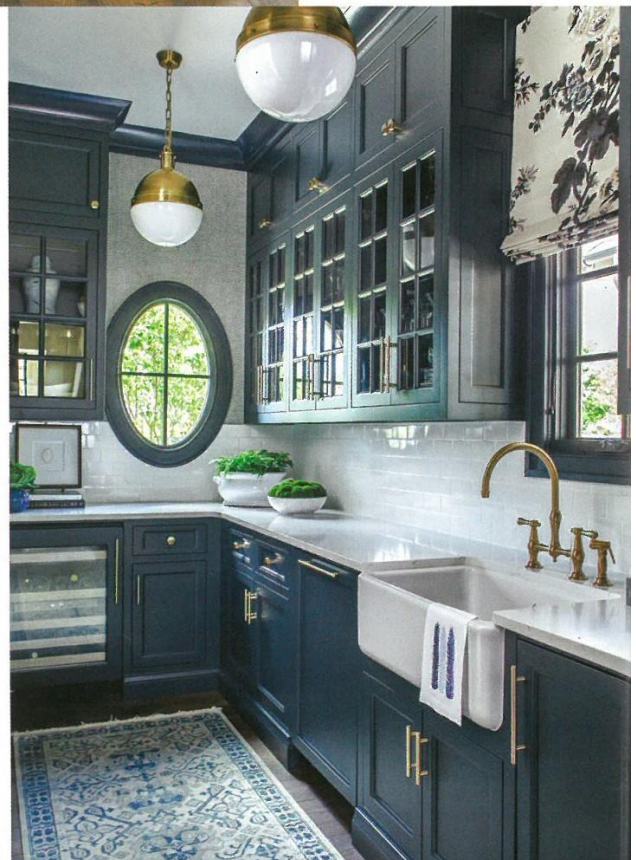


INTERIOR DESIGNER Mallory Mathison Inc., (404) 313-2214; mallorymathison.com ARCHITECT Brandon Ingram, (404) 205-5245; cbrandoningram.com KITCHEN DESIGNERS Mallory Mathison Inc. and Brandon Ingram CONTRACTOR Avin Properties CABINETRY Joey Anderson with Keystone Millworks LIGHTING Visual Comfort KITCHEN STOOLS Serena & Lily RUNNER Caitlin Wilson FAUCET Newport Brass COUNTERTOPS Silestone RANGE Thermador MARBLE ACCESSORIES AND WOODEN SPOONS Williams-Sonoma PAINT Alabaster by Sherwin-Williams PAINTING Paige Kalena Follmann **BUTLER'S PANTRY** RUNNER Moattar, Ltd. ROMAN SHADE Schumacher Pyne Hollyhock WALLPAPER Phillip Jeffries Chevron Chic APRON SINK Rohl FAUCET Newport Brass ACCESSORIES Joseph Konrad CABINET COLOR Railings by Farrow & Ball BAR LINENS Gramercy GLASSWARE Williams-Sonoma PAINTING Catherine Baker Jones

European architecture. "We had to be very careful with making it feel connected, both architecturally and decoratively, with the rest of the house," Ingram says.

Glenn's signature love of color is seen in her bold approach to the butler's pantry. Dark navy cabinets afforded visual heft when contrasted with the white kitchen walls and the butler's pantry and Phillip Jeffries chevron grasscloth wallcovering. On the Roman shade, Schumacher's popular chintz pattern matches the dining room wallpaper, a fitting choice because of the butler's pantry placement between the kitchen and dining room.

Alternating light Silestone Eternal Calacatta Gold countertops on the island and charcoal soapstone on the perimeter veered the kitchen away from a cold, contemporary feel and towards a more transitional style. Horizontal brass banding and a curvature in the design of the vent hood also help the scheme avoid an industrial edge. Handmade subway tile provides sparkle, while the use of satin brass fixtures infuses an easy warmth into the chic family spot. "They wanted it to be beautiful and comfortable, but not formal," Glenn says.







winner

COHESIVE AND CLASSIC

Antique brass, a smoky palette and all-out function flavor a kitchen renovation by Jessica Bradley and Laurie Lehrich

Photography by
MARC MAULDIN

WHEN DESIGNER JESSICA BRADLEY's clients wanted a kitchen that could accommodate their large family and frequent entertaining—and provide more storage and an improved workflow—she knew just the kitchen designer for the job. Thus was the start of her partnership with Laurie Lehrich, formerly with Design Galleria Kitchen & Bath Studios and now owner of Cardea Home.

The pair sought to design a kitchen with equal parts sophistication and handsomeness. They reconfigured the layout to increase the size and create a walk-in pantry (carved out of an office) and coffee bar without losing the existing mudroom and butler's pantry. The update lives in harmony with the rest of the home, thanks to the strategic placement of a recessed paneled wall for appliances and extras such as refrigerator drawers. "If you use the space wisely and creatively, you can get more out of the space that you have," Lehrich says.

Bradley worked with the homeowners

STYLE
NEWS



INTERIOR DESIGN Jessica Bradley Interiors, (404) 846-3220; jessicabradleyinteriors.com KITCHEN DESIGN Laurie Lehrich, Cardea Home, (404) 295-4453; cardeahome.com BUILDER Builders II COUNTERTOPS Marmi Natural Stone HARDWARE AND SUBWAY TILE BACKSPLASH Waterworks FAUCET Ferguson OVAL TABLE Rita from Tritter Feefer CHAIRS Capitola chair from Palecek ISLAND STOOLS Beau Studio LIGHTING Hicks pendant through Circa APPLIANCES Distinctive Appliances



after they first bought the home in Morningside/Lenox Park, and she continued the transitional design and blue-gray palette from the living spaces into the kitchen. Wire-brushed white oak cabinets in a soft blue-gray stain and a vent hood in a similar-toned wash pick up the steely tones from the island. “It was easy to pull that aesthetic into the kitchen,” Bradley says. “It transitioned so well.”

The quartzite island and perimeter countertops, along with a subway tile backsplash set the shiny backdrop for antique brass fixtures, such as brass and matte black island pendants. Meanwhile, Bradley and Lehrich waited for a new-to-the-market faucet with an extra embellishment: crisscrossed knurling on the touchless nozzle. Quartzite wrapped around the front of the sink allows the stone to capture a bit more attention. The design duo agrees: The kitchen is effortless, elegant and not overdone.

STYLE
NEWS

KITCHEN JUDGES



Since establishing Harrison Design's interior design practice in 2000, **KAREN FERGUSON** has built an impressive body of work, representing a range of styles from modern to traditional. Two of her most recent projects are a three-story contemporary home in historic Brookhaven and a stately, English-style residence next to a national park in Kenesaw. Karen has received 10 awards from the Georgia chapter of the American Society of Interior Design (ASID), including Residential Show House Gold and Product-Custom Design by ASID Practitioner Residential Gold, both in 2017.

AARON DAILY is a principal with Historical Concepts, a traditional architecture and planning firm based in Atlanta and New York. Daily joined the firm in 1997, and in the two decades since, his work has run the gamut from custom homes to complex commercial buildings, including multiple Shutze Award-winning projects. His strong consensus building skills have been instrumental to many of the firm's civic projects, as well as his most recent endeavor, the design of Historical Concepts new office, a four-story brick building currently under construction in Atlanta's Glenwood Park neighborhood.



COURTNEY SHEARER is an award-winning kitchen and bath designer with more than 10 years of experience. Currently director of design for Bell Kitchen & Bath Studios, she is committed to designing spaces that reaches their highest potential. Her design blog, The Cow Spot, was a finalist for Best New Design Blog for the 2012 Design Bloggers Hall of Fame and was nominated for a Homie Award by Apartment Therapy in 2014. In 2011, Shearer won the Calla Award for Large Kitchen, and in 2013, she was selected by the National Kitchen & Bath Association as one of the industry's Top 30 under 30.



Kitchen & Bath NEWS

COMPAC ATLANTA is the latest distributor for Compac quartz slabs. All colors are on display at the showroom and its attached warehouse. 1426 Chattahoochee Ave. NW, Atlanta, GA 30319; (404) 348-6810; compacatlanta.com

COLONIAL LIGHTING has opened a new, 17,000-square-foot showroom in Decatur. The space will also showcase fireplaces, fireplace surrounds and garage doors, all inside of CR Home. 224 Rio Cir. Decatur, GA, 30030; (404) 378-3132; constructionresourcesusa.com

CIOT is coming to Atlanta! The family-owned company specializes in mid- to high-end plumbing, tile, slabs and hardwood flooring. Slated to open in the spring, Ciot Atlanta will offer a 24,000-square-foot showroom and a 55,000-square-foot slab gallery, located in the upper Westside. (470) 825-1367; ciot.com



WOOD-MODE Lifestyle Design Center is now open at ADAC West. The 2,500-square-foot space, pictured, highlights the latest products in the Wood-Mode and Brookhaven lines, and kitchen design brands such as Sub-Zero, Wolf, Asko, Blanco, Kraus, Grohe, Neolith and Caesarstone. 349 Peachtree Hills Ave. NE, Suite A-5, Atlanta, GA 30305; (866) 277-3755; atlanta.wood-mode.com

WALKER ZANGER has completed the expansion and renovation of its Miami Circle showroom. 791 Miami Circle NE Atlanta, GA 30324; (404) 365-9991; walkerzanger.com

STONE CENTER ATLANTA is the new distributor of AntiEtch, a solution that prevents the toughest stains and acidic solutions from coming in contact with marble countertops. 1325 Oakbrook Dr., Suite C, Norcross, GA 30093; (770) 446-5155; stonecenteratlanta.com



Layered Luxe

Graceful striations of tan, walnut-brown, cream, black and gray—flowing in parallel layers with dark veins that cut across the grain—are the ingredients of **CAMBRIA's** fresh Clairidge surface, pictured. Clairidge is part of Cambria's new Woodstone Collection, one of two new collections consisting of nine moody but rich natural stone designs. *Cambria is available at Cambria Gallery at Buckhead Atlanta, (404) 419-1250, cambriausa.com*

THIS JUST IN!

New and noteworthy innovations in the kitchen-and-bath world—from the latest showrooms to time-saving gadgets

Written by THE EDITORS



Marble Tap

Montaigne, a new collection from **THG PARIS** with French interior designer Stéphanie Coutas, pays homage to a prestigious marble native to southwest France which has graced storied structures like St. Peter's Basilica in Rome. Available for basins, showers and baths, the marble magnifies nature. *Available through Renaissance Tile & Bath, (404) 262-9709, renaissancetileandbath.com*



GOOD OMBRÉ

Inspired by the fashion world, **KOHLER's** statement-making ombré faucet finish—part of its recently released Components collection—melds two vibrant metal finishes together to render a subtle but striking transition from light to dark. Scratch- and tarnish-resistant, the faucet is available in rose gold, polished nickel and titanium. *KOHLER Signature Store by PDI, (404) 334-8098, kohlersignaturestoreatlanta.com*



TRIM & SLIM

GROHE's new Lineare bath and shower faucet collection offers a minimalist solution to plumbing by reducing its design to the slimmest possible appearance. The single-handle bathtub filler, pictured in StarLight Chrome, combines a cylindrical body with a thin rectangular handle and spout for the ultimate in flexibility and usability. Grohe is available through Ferguson Bath & Kitchen Gallery and Guy Gunter Home; grohe.us

Geometric Glam

Shapely, 3-dimensional tiles comprise the latest collections from BEDROSIANS TILE & STONE. Both the hexagonal Hedron collection and the triangular Triangolo collection, left, provide unique depth and dimension via embossed or molded patterns available in matte, glossy and metallic finishes. Available through Bedrosians Tile & Stone, (470) 264-3030; bedrosians.com

PLUGGED-IN

WOOD-MODE debuted its second North American Lifestyle & Design Center at ADAC West in fall 2018, highlighting the latest products from the Wood-Mode and Brookhaven cabinetry lines, as well as kitchen design brands such as Sub-Zero, Wolf and Neolith. Created with outlet manufacturer Docking Drawer, Wood-Mode's useful in-drawer electrical power outlet, right, includes AC outlets and USB ports to charge everything from cell phones and tablets to laptops, fitness trackers and e-readers.

Available through Wood-Mode Lifestyle & Design Center, ADAC West, (866) 277-3755; atlanta.wood-mode.com







ART of *the* EDIT

Formal translates to fun—and fresh—in SUZÉ SURDYK JONES' judiciously layered new abode

WRITTEN BY

Emily Jackson

PHOTOGRAPHED BY

Mali Azima

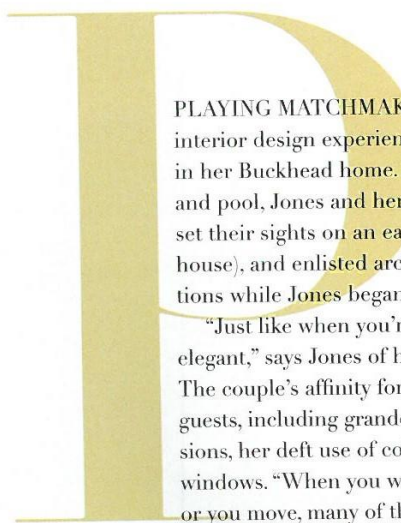
The New Formal

Handmade silver pieces from Germany rival a French painting and a sculpture by B.J. Coughlin. The English table from Turnage Place Estate Sales Co. is set with Baccarat crystal, Wallace Grand Baroque silver, Herend china and Sferra linens.



Classic Comfort

above A pair of antique chairs upholstered in Scalmandré silk velvet pull rich tones from the Designer Carpets rug. Details such as Edgar-Reeves lampshades, a clay sculpture by Marci Turk and an African figure piece add a finishing layer.

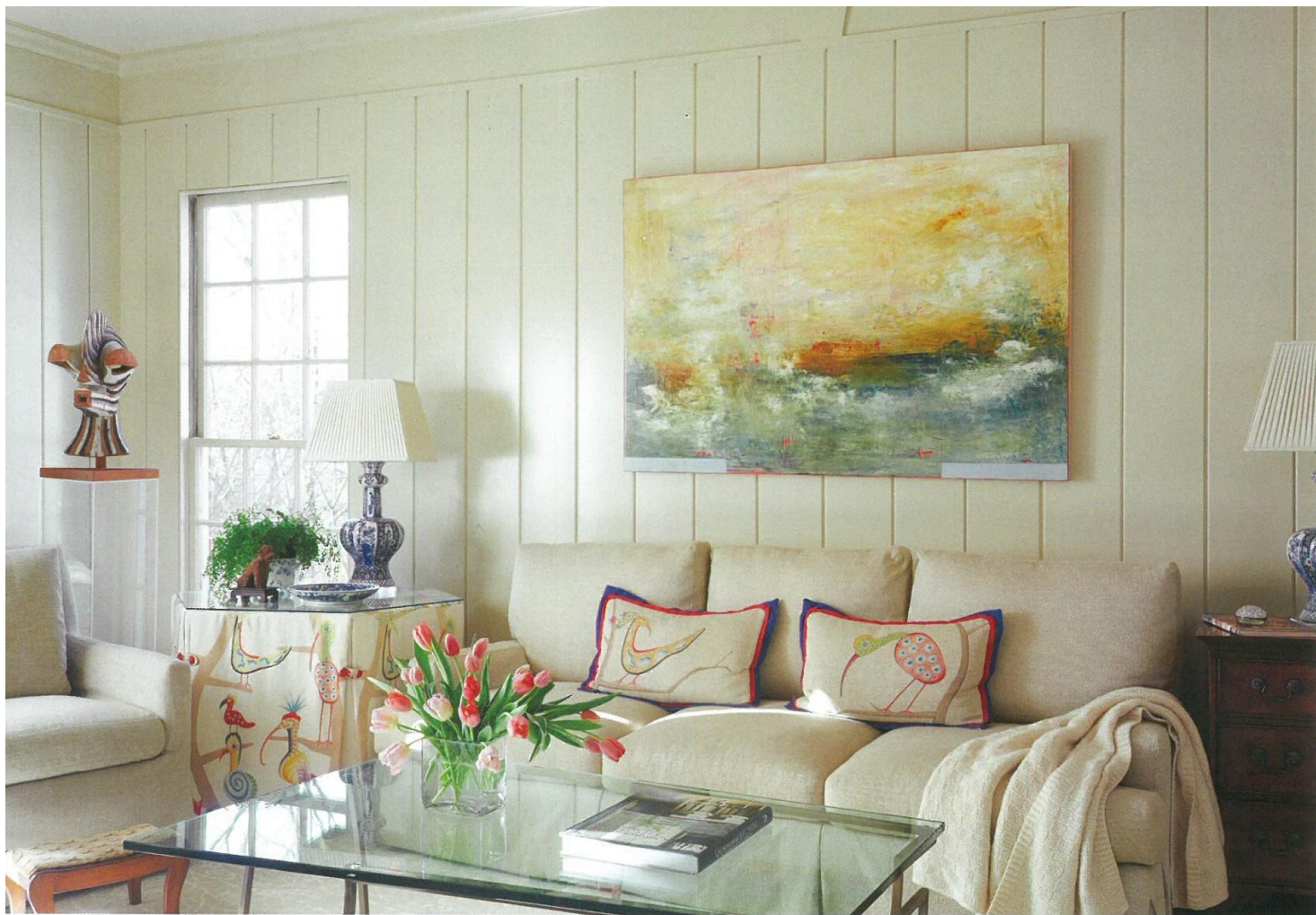


PLAYING MATCHMAKER IS A DELICATE ART. For Suzé Surdyk Jones, decades of interior design experience proved paramount in marrying function and sophistication in her Buckhead home. After years of living on an estate complete with a guest house and pool, Jones and her husband were keen on the concept of convenience. The pair set their sights on an early 1960s ranch house (which also happens to boast a guest house), and enlisted architect Michael P. Landry to implement smart structural solutions while Jones began the task of judiciously editing the interiors.

“Just like when you’re dressing, simplicity has a great place in making a room feel elegant,” says Jones of her pared-down approach to decorating the cozy, one-story plan. The couple’s affinity for entertaining necessitated proper spaces for hosting a coterie of guests, including grandchildren. In the formal living room, a scene for celebrated occasions, her deft use of color plays up the airy ambience pouring in from generously-sized windows. “When you work off of a color palette you love, then as your lifestyle changes or you move, many of the pieces can easily be placed in different rooms,” advises Jones



Timeless Touch
above Floor-to-ceiling draperies frame a Brunswick & Fils fabric-clad sofa. A collected feel is achieved with artwork from France and a menagerie of antique furnishings. left Holding court in the light-filled foyer is a chest Jones has long loved for its interesting burl wood patina. The top is a perfect resting place for an antique lamp and everyday accoutrements such as fresh flowers or car keys.



“Using only pieces that you love is about beauty, comfort and livability.”
 —Suzé Surdyk Jones

Natural Calm

above A bird motif, seen on hand-painted pillows and skirted round table from Jerry Pair, lends color to the family room. An abstract work from Pryor Fine Art pops against a Lee Industries sofa and chairs recovered in oatmeal fabric to “play second fiddle to the artwork and, really, the people,” says Jones. *right* A cream scheme opens up the once dark wood paneled space. A geometric fire screen and iron-and-glass coffee table by Andrew Crawford add interest; a painting sourced in Paris and an African sculpture purchased at auction adorn the mantel.



Sweet Retreat

In the grandchildren's room, a blue-and-white Summerhill fabric sets a serene tone. Jones reupholstered doll-house furniture to fit its new setting. A mirrored dressing table will grow with her granddaughter.



of collecting with longevity in mind.

Color is carried into the dining room where Benjamin Moore's Buckingham Gardens strikes a verdant chord—becoming a backdrop for Jones' collection of art, Herend porcelain and heirloom silver. Under the glow of a gilt chandelier, these pieces inspire convivial conversation — “If you're sitting at dinner and you can't think of anything to discuss, you can always talk about the art,” says Jones with a laugh. The prominently placed sculptures are travelers of sorts—set atop acrylic stands, they can be rotated seasonally to rooms that will host the most admirers. “Using only pieces that you love is about beauty, comfort and livability,” she explains.

Jones practices this in the family room, where she fashioned favorite vases brought back from Aix-en-Provence, France, into a pair of lamps. Despite cherished treasures delighting at every turn, nothing in the home is cosseted thanks to the livable layers Jones incorporated. In the grandchildren's guest room, custom furniture is swathed in performance fabrics, while clever storage hides toys and painted on the ceiling add an ethereal touch.

This nimble blend of thoughtful comfort and refined aesthetic is woven throughout the entire home. Such is the mark of a skilled matchmaker—striking a perfect balance between opposites. *See Resources, Back of Book.*



COMMON THREAD

For a 1930s Georgian that was last remodeled in the 1970s, MELANIE TURNER packs in the punch by leaning into both eras

Written by TATE GUNNERSON

Photographed by MALI AZIMA

Going for the Bold

One of interior designer Melanie Turner's favorite items in the house, a green velvet settee by Bernhardt Design, is part of an eclectic mix of furnishings that includes a comfortable chair covered in leopard fabric from Schumacher and a sofa from Lee Industries.



Glam Slam

left Cabinetry from Karpaty Cabinets, Calacatta Gold marble countertops and a hood from Francois & Co. completely transformed the kitchen. A Noir chandelier illuminates the Saarinen table at a new corner banquette, which is covered in fabric from Ernest Gaspard & Associates. *below* Green walls, moldings and cabinetry define the butler's pantry. *opposite* A custom brass and glass shelving unit offers a functional storage solution without interfering with natural daylight in the renovated chef's kitchen.



LIMITATIONS OFTEN CREATE opportunities, and Melanie Turner's renovation of a 1930s-era Georgian in Buckhead had its share, including a restricted time line, original floorplan and a relatively small footprint in which to work her design magic.

"Smaller projects like this are an enjoyable creative outlet," Turner explains, noting that she was actually inspired by the dated decor, which had last been updated decades ago. "The clients are young, so they're not going to remember the 70s. It just made sense."

Embracing the living room's cozy proportions, Turner had the walls, moldings and traditional fireplace mantel painted in an olive green hue, which is accented by mustard draperies, antique green and white pottery and vintage artwork. "It's layered," Turner explains.

On one side of the room, a sofa and chair





“EVERY SPACE HAS ITS OWN PERSONALITY, BUT THERE’S A COMMON THREAD.” —MELANIE TURNER



Packing the Punch

A lively wallcovering from Schumacher and painted moldings add a sense of drama to the formal dining room, which is furnished with a wood table from Bernhardt Design and a mix of chairs. *opposite* Turner created layers of interest in the salon-style living room, from leopard-print pillows and enveloping hues to graphic elements.



Cheerful Chic

left Brass hardware and a bamboo-style mirror accent the cheerful yellow wallcovering by Zoffany in the master bathroom. *below* "In a smaller space, each piece should be especially special," declares Turner. *opposite* The patterned rug, draperies and bedding in the master bedroom coordinate with the wallcovering in the en suite bathroom.

covered in chocolate fabric with white piping surround a burl cocktail table. On the other, a green velvet sofa settee and a bergère-style chair re-covered in a leopard print fabric create a cozy spot for conversations in front of the window. "There's nothing prettier than a green velvet sofa," Turner says.

Pattern also plays a crucial role. The formal dining room's painted yellow moldings, for example, accent a boisterous floral wallcovering. It's one of several throughout, including a bright floral pattern on a black background in the powder room, and another floral on a yellow background in the master bathroom. "Every space has its own personality, but there's a common thread," Turner says.

Things are more subdued in the kitchen, which nevertheless underwent one of the most dramatic transformations, its footprint expanded into the former study. A green-painted island with a white Calacatta Gold marble waterfall-style top accents the white perimeter cabinetry and coordinates with the fabric that Turner selected for the new built-in banquette. In front of the window, a custom brass and glass shelving unit holds plates without obstructing the natural daylight.

"(The husband) is in the restaurant business, so to be able to have the plates right there makes it easy on the chef," Turner says.

With the main renovation complete, the homeowners are slowly adding to the interior as they collect unique pieces that reflect them, and Turner praises them for their well-considered approach. "It's nice to be able to fill in spaces as you live in the house," she explains. "In a smaller space, each piece should be especially special." *See Resources, Back of Book.*





“IN A SMALLER SPACE, EACH PIECE SHOULD BE ESPECIALLY SPECIAL.”
—MELANIE TURNER

clockwise from top
Cubist artwork and antique pottery read as one collection when grouped together. A green mirror stands out against a Cole & Son wallcovering. Turner created a pooch “spa” with heated floors and subway tile from Daltile.

*Technicolor
Dream*

Inspired by the existing yellow-and-black floor tile. Turner outfitted the guest bathroom with painted cabinetry by Karpaty, black subway tile from Source, LLC, and a mirror by Noir.



CLASSIC REDUX

A YOUNG FAMILY WITH AN
ABBREVIATED TIMELINE PUTS
THEIR STAMP ON A 1930s HOME

WRITTEN BY

Sejal Bhima

PHOTOGRAPHED BY

Emily Followill



Cool + Collected

"I wanted our home to be a bright, beautiful backdrop for the memories we were about to create as a family," says Lauren Lowe of her vision. The chairs are Bungalow Classic for Highland House; the Bennison and Jasper pillow fabrics are from Ainsworth-Noah.









Simply Elegant

right A pared down aesthetic in the master bedroom helps the small space live larger. Lowe repeated Colefax and Fowler's iconic Bowood floral chintz throughout the room. *left* An ornate mirror hanging above CB2's acrylic console showcases Lowe's knack for effortlessly combining design genres. *below* An abstract painting by McKenzie Dove represented by Pryor Fine Art rests on an English Colonial-inspired dresser from Williams-Sonoma Home.



Just as intriguing was the couple's timeline; they were expecting their first baby in just four short months. So with renovations out of the question, Lowe got creative in outdated spaces such as the kitchen and powder room, which she boldly painted a custom robin's-egg blue and polo green, respectively, to give them fresh appeal.

The couple also held an estate sale to sell all of their existing furniture to make way for more classic pieces that better matched their new home's historical bones. Lowe turned to retailers like One Kings Lane for ready-made furnishings such as the master bedroom headboard, while going the custom route for select pieces such as the living room sofas, which arrived just two weeks before the birth of their son, John Ellis.

Also part of the equation was an exquisite art and antique collection that once belonged to the house's previous owners, which Lowe and her husband







Child's Play
left and opposite

Brimming with charm, the nursery features wallpaper from Cole & Son. Like many of the home's vintage and antique pieces, the dresser once belonged to the house's previous owners. The chairs were purchased at Scott Antique Markets and the crib is from Wayfair. The crib skirt is custom. The fabric is from Ballard and the trim is Passementerie through Travis & Company. *below* The clean lines of the bookshelves counteract the room's more traditional elements and offer a spot to display prized items like a print that was once in Lowe's own nursery as a child.

negotiated as part of the purchase. "During the showing, I came across an old Venetian mirror that was pretty much buried in a bedroom, and it inspired me to ask if they would let us keep everything," says Lowe. Freshly polished, the once hidden gem now proudly hangs in the foyer.

The treasure trove of items also included Persian rugs, oil paintings and dressers that Lowe worked into her design scheme that favors a mix of prep (her father hails from Connecticut) and Southern elegance (influenced by her mom's Atlanta roots). But what really sets Lowe's work apart is her infusion of modern elements as well, which she attributes to her background in commercial design.

Lowe was most excited to bring her trademark aesthetic to life in her son's nursery, where a subtle nautical theme gives the petite space a dose of whimsy. A striped powder blue wallpaper serves as a backdrop for cherished pieces such as a drawing of her father's sailboat and Lowe's own teddy bear, both of which she had framed. Most special of all, she says, are the two armchairs—one for Lowe, and one for her husband. "I wanted there to be two spots to sit because what I'm going to remember most about my son being a baby is spending time together in the nursery as a family," she says.

"I think we'll be really proud to tell our son about the work we put into this house," she adds. "It's small and interesting, but most importantly, it's extremely personal, which makes it uniquely ours."

See Resources, Back of Book.





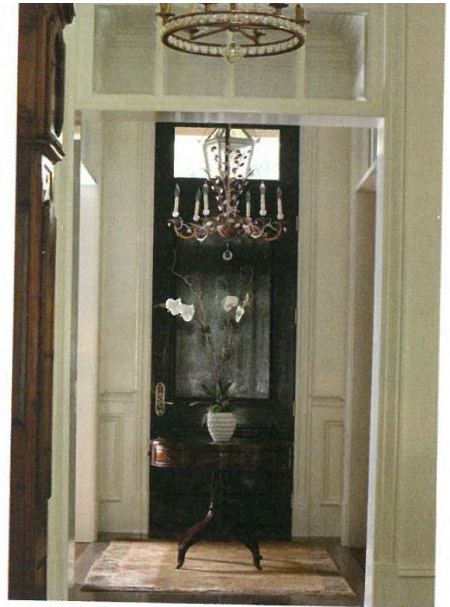
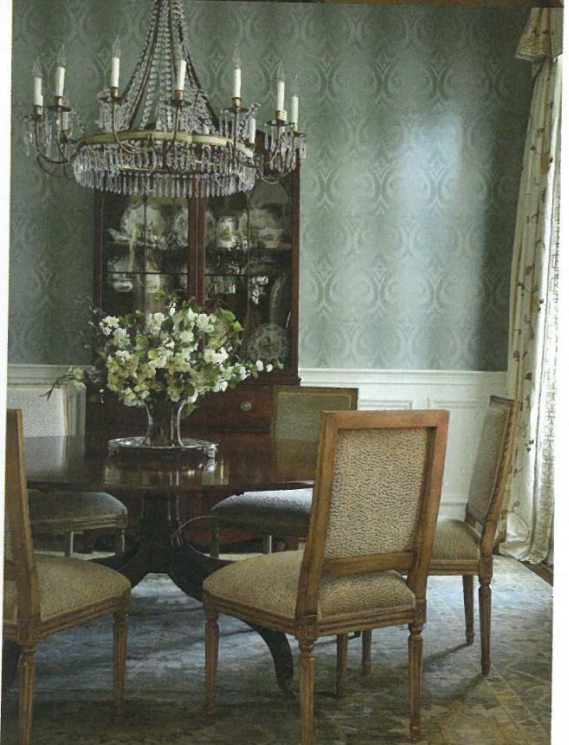
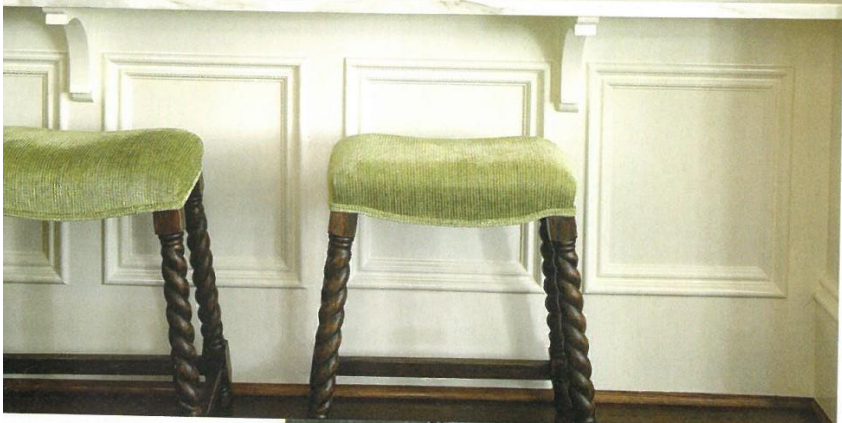


ENGLISH ELEGANCE

Douglas W. Hilton gives the House of Hazen proprietress a haven that embraces her love for all things English

WRITTEN BY
Kate Abney
PHOTOGRAPHED BY
Chris Little

Layered Luxe
The living room is equal parts inviting and chic. Here, a subtle Suzanne Tucker floral covers a pair of tight-back armchairs, and reappears once more on accent pillows on the sofa. The Vaughan chandelier is from Ainsworth-Noah. The 19th-century trumeau mirror and a number of accessories from House of Hazen make for perfect conversation pieces.



INTERIOR DESIGNER DOUGLAS W. HILTON says House of Hazen, the gift boutique run by Rhonda Hazen on East Andrews Drive, feels just like walking into her home. He should know, since he's designed four residences for Rhonda and her husband, CTSI Global CEO Ken Hazen, over the past decade.

"Their busy careers mean they consider home a sanctuary; a retreat from everything else," the owner of DWH Interiors says. The most recent residence he'd designed for the Hazens was a "transitional-contemporary" unit at the St. Regis Atlanta. So when the couple announced they'd purchased a traditional, English-inspired townhome in a nearby gated enclave, Hilton knew they'd be starting from square one.

"The building was designed to feel Edwardian, so the rooms are gracious, not large—though there are lots of them; a room for every activity," the designer explains, noting features such as the magnificent curving stairwell ascending to four floors and three outdoor terraces that accommodate all manner of outdoor living.

With all five children out of the house, the empty nesters could truly use each space to the maximum (though with their two youngest sons recently enrolled at Auburn and Oglethorpe Universities, respectively, the townhome's two guest rooms are still bedecked with the boys in mind).

Intimate Feel

above Designed to be rustic, the kitchen's gray-veined Calacatta marble, high-gloss cabinetry and brass fixtures also convey a sense of elegance. Barley-twist stools from Vanguard, purchased through Brice Ltd., are covered in a celery Osborne & Little velvet through Ainsworth-Noah. right Beneath a tole-and-crystal David latesta chandelier from Ainsworth-Noah, a Holland MacRae dining table anchors chairs from Smith Grubbs & Associates covered in a Cowtan & Tout velvet.



Gracious Living
Flanked by a collection of blue-and-white porcelain, the custom four-panel farm scene was created by a Memphis-based artist for House of Hazen. The French dining table and chairs are from House of Hazen. *opposite, top right* The townhome's graceful architectural features are on display in the foyer, such as a transom window and a door painted Farrow & Ball's Pitch Black.

Sitting Pretty

A Romo velvet on a pair of antique chairs from Hazen's boutique and a Thomas O'Brien for Visual Comfort chandelier shine in the master sitting room.





And a few focused renovations—including overhauling the kitchen—enhanced these capabilities.

The historic influences of the architecture inspired Hazen to channel the dignified elegance of *Downton Abbey*; so the cooking space was made “more rustic, as kitchens were in that era, used for preparing food, not eating it,” Hilton notes, pointing out the barley-twist counter stools and the faux trophy mount above the hood.

Hazen also requested “yummy” textures—so Hilton delivered with plushness and tactility at every turn. Textiles and wall-coverings were culled from Jim Thompson and Cowtan & Tout; furniture was gathered from Hilton’s standbys such as Jane Marsden, Parc Monceau and William Word Fine Antiques. Lighting selections included Ainsworth-Noah and Circa Lighting favorites, plus a few antiques. And because every room would need to look layered and plush, opulent rugs and carpets were culled from John Overton Oriental Rugs, Sullivan Fine Rugs, Moattar and Stark.

“None of these were casual selections,” Hilton says, adding that Hazen was intimately involved with the decision-making process. We probably went through 20 to 30 options for every [category].”



“We’re both big shoppers,” he continues. “She travels all over the country for her boutique.” So for every buying trip—be it a brief pop-in at Gramercy Home or a grand tour of ADAC showrooms—Hazen was at the ready. “I think this project reflects what I enjoy most [about residential design]. To develop that working relationship. The client who is very involved and very opinionated is the kind I want.”

To satisfy Hazen’s desire for a turn-of-the-century effect, Farrow & Ball paints were musts. The historic formulas were applied in colors like Cooking Apple Green and Pointing white, which give the walls an estatelike glow. The sooty shade in the entryway is Pitch Black—“The same color that’s on 10 Downing Street; Hazen researched it,” Hilton says.

Fit for a Queen

In the master bedroom, Gramercy Home linens grace the Ferrell Mittman St. George bed, sourced from Ainsworth-Noah, while the sumptuous canopy and English oil painting were repurposed from the Hazen’s previous residence.



Feminine Touch

The master bath features a celadon-colored floral-print paper (Ardley in Sage by Peter Fasano) and a painting from Huff Harrington Fine Art. An antique Tabriz rug from John Overton grounds the room in softness, while Vaughan's Chambord chandelier and coordinating David latesta Marseille sconces lend it a formal, feminine flourish.





Above it All

A trio of outdoor terraces accommodates lounging and entertaining thanks to seating from Kolo Collection, contemporary Dedon accent tables, and weather-resistant textiles from Jim Thompson, Paul+ and Link Outdoor.

The pair also was intentional in including some of those mainstays of English decorating, like oil portraiture and antique creamware gathered here and there—at spots like The Stalls, Interiors Market and Scott Antique Markets. Most importantly, Hazen’s love for accessories makes the home an evolving environment, too, since she adores bringing home new pieces from her shop. “The Hazens are not stagnant people, and their house is constantly changing—new pillows, new art. It’s full of movement,” Hilton says.

Traditional though it may be, together they’ve ensured that this four-story townhome always feels fresh. *See Resources, Back of Book.*