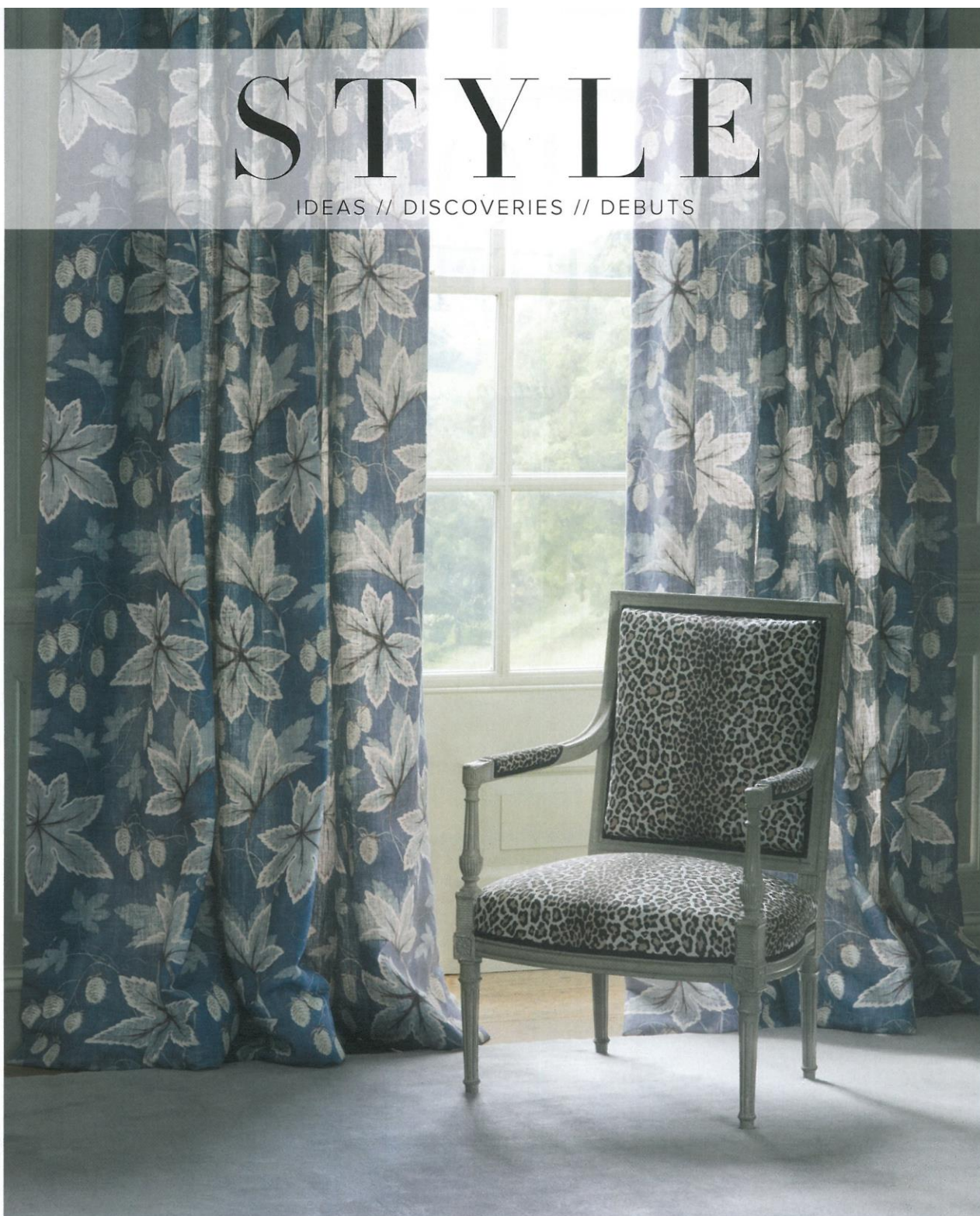


STYLE

IDEAS // DISCOVERIES // DEBUTS



Easy Elegance

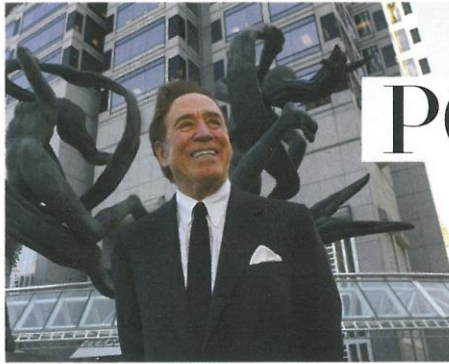
Scandinavian sensibilities mash up with classic English style in **COLEFAX & FOWLER**'s 2016 collection, and the results are as romantic as they are sprightly. Elegant florals, in the form of star-like leaves and woody pine cones, are rendered in a soft, sensual palette; pictured is Linton in navy (draperies) and Panthera in chocolate (chair). Available through Cowtan & Tout, ADAC, (470) 312-2050; cowtan.com

STYLE
 INFLUENCERS

THE INCOMPARABLE

JOHN PORTMAN

WRITTEN BY *Suzanna Cullen Hamilton*



Atlanta architect and real estate developer John C. Portman, Jr. forever changed the geographical and business landscapes of cities across the globe, integrating art and atmosphere into massive urban mixed-use developments.



Experience

1950s: John C. Portman, Jr. graduated from Georgia Tech with a Bachelor of Science in architecture and opened his firm in 1953, the same year he incorporated his first sculpture commission into his architectural design.

1960s: Portman literally and figuratively shattered ceilings when he designed the Hyatt Regency in Atlanta; the 22-story atrium with glass elevators was the first contemporary atrium hotel in the world. Portman also began the development of Peachtree Center, a sprawling mixed-use complex that now anchors 14 blocks downtown. With the creation of the Merchandise Mart (now AmericasMart) and ADAC, Atlanta becomes a national design anchor.

1970s: Portman's prestigious hotel developments expanded to include The Westin Peachtree Plaza in Atlanta and The Westin Bonaventure Hotel & Suites in Los Angeles.

1980s: When Portman added the Marriott Marquis to his cache of downtown hotels—with bold bronze lions by Olivier Strebelle guarding the entrance—

he cemented Atlanta's reputation as a high-profile convention city. His urban mixed-use developments reached a global scale with expansion into Singapore. Portman greatly enhanced San Francisco when he developed the Embarcadero Center on 8.5 acres in the Financial District.

1990s: Portman received international acclaim when he opened the Shanghai Centre, the first mixed-use project in the bustling Asian city. Suntrust Plaza opened in Atlanta.

2000s: Projects in Beijing, Mumbai and Shanghai reinforced Portman's international impact on multiuse developments, while projects across the United States ensured his legacy. The High Museum of Art opened *John Portman: Art & Architecture*, an exhibition shown around the world. In 2016, Portman transformed 230 Peachtree, an office building he first built in 1965, into a Hotel Indigo, restaurant JP Atlanta and office space; it opens to AmericasMart.

TODAY: John Portman & Associates maintains offices in Atlanta and Shanghai and continues to develop international properties. With the firm in its second generation, Portman now spends his time sculpting and painting.

top Architect and real estate developer John C. Portman, Jr. *above* Portman's downtown Atlanta restaurant, JP Atlanta, includes artwork created by Portman himself. *opposite, clockwise from top* Built more than 50 years ago, ADAC helped solidify Atlanta as a national design anchor; natural light flows through the design center's expansive core. The Hyatt Regency Atlanta, Portman's first atrium hotel. Portman's vacation home, Entelechy II, on Sea Island.

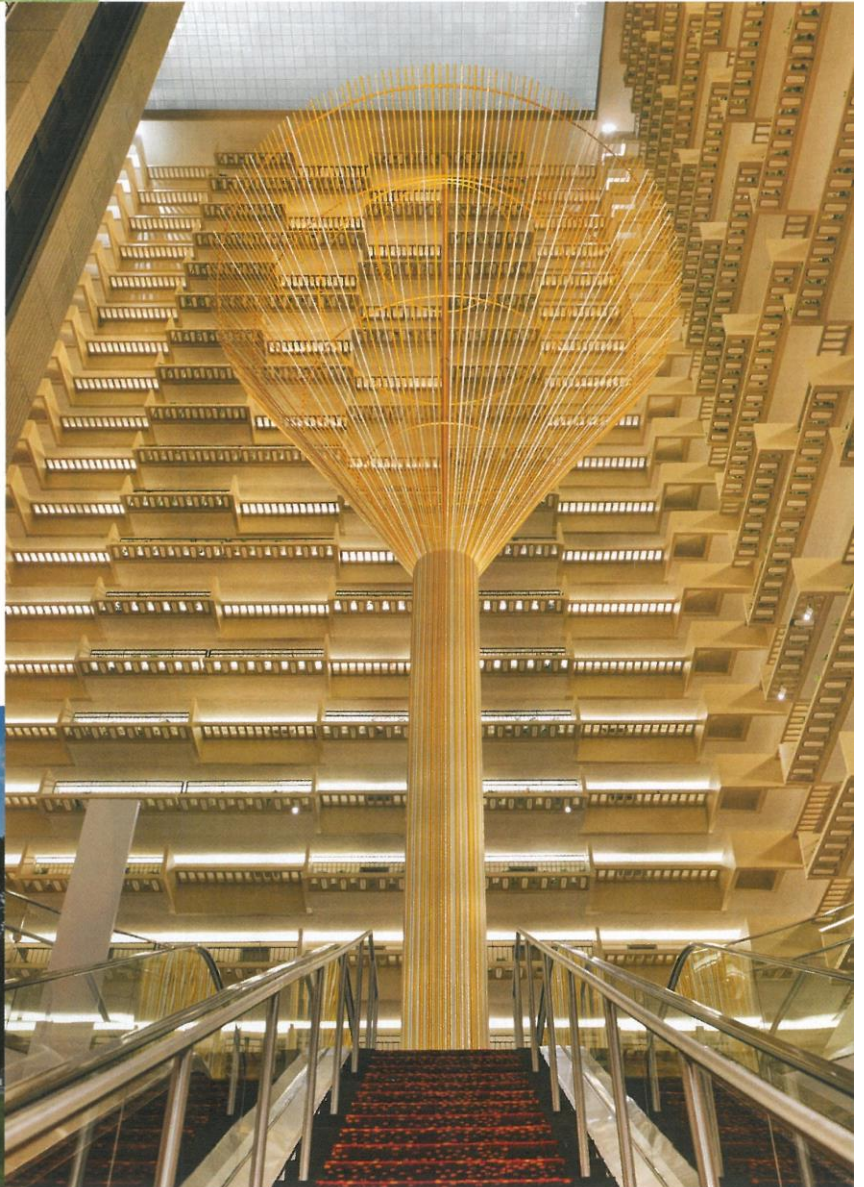
JP ATLANTA AND ADAC BY DAVID CHRISTENSEN; ENTELECHY II BY BRIAN GASSEL



After noticing that people look down and do not speak in elevators, Portman designed glass elevators for the Atlanta Hyatt Regency in 1967, noting "a glass elevator lets people's spirits expand."

The Legacy

Over the course of more than 60 years, Portman has received numerous honors, including being named an Academician by the National Academy Museum & School, receiving the Exceptional Achievement Award from Georgia Tech in 1986 and having chairs named for him at both Georgia Tech and Harvard. Portman has served on the boards of numerous organizations, including the Atlanta College of Art and Georgia Tech; is trustee emeritus of the Atlanta Arts Alliance; and has served as the director of the High Museum of Art.



KITCHEN & BATH NEWS



KOHLER has opened a showroom in the Buckhead Exchange shopping center. The new signature store, solely owned by Plumbing Distributors Inc., has a range of Kohler products—including faucets, toilets and accessories—on display, as well as inventory from Kallista and Robern. 3167 Peachtree Rd. NE, Atlanta, GA 30305; us.kohler.com

Kohler-owned **ANN SACKS** will reopen at ADAC in early spring. The showroom will display a variety of luxury tile and high-end plumbing in a range of styles. 351 Peachtree Hills Ave., Atlanta, GA 30305; (404) 264-0255; annsacks.com

Minnesota-based quartz provider **CAMBRIA** has selected Gwinnett County for its Atlanta showroom and warehouse facility. Also look

for Cambria countertops at the 2017 Luxury Living Show at Phipps Plaza this May. 1620 Satellite Blvd., Suite B, Duluth, GA 30097; (770) 814-3073; cambriausa.com

CARDEA HOME, owned by Laurie Lehrich, is now offering high-quality AGA ranges for both demonstrations and sales. To set up an appointment, call (404) 295-4453. agamarvel.com

PORCELANOSA has added lighting to its comprehensive inventory, which includes tile, hardwood flooring, cabinetry and countertops. 3255 Peachtree Rd. NE, Atlanta, GA 30305; (404) 973-0640; porcelanosa-usa.com

RENAISSANCE TILE & BATH is now featuring O'Neil Ruppel's collection of plumbing (which was also used at the Atlanta Homes & Lifestyles 2016 Home for the Holidays Designer Showhouse). 349 Peachtree Hills Ave., Atlanta, GA 30305; (404) 231-9203; renaissancetileandbath.com



YOUR HOME SAYS
A LOT ABOUT YOU.
WE'RE HERE TO LISTEN.

Your home is a reflection of you. Ferguson's product experts are here to listen to every detail of your vision, and we'll work alongside you and your designer, builder or remodeler to bring it to life. Request an appointment with us today.

FERGUSON
Bath, Kitchen & Lighting Gallery

BUCKHEAD
(404) 495-9919

ATLANTA / ROSWELL
(770) 442-1800

FAYETTEVILLE
(770) 716-4144

SUWANEE
(678) 546-0760

FergusonShowrooms.com

©2016 Ferguson Enterprises, Inc. 1116 321308



Miele Generation
6000 Steam Oven,
mieleusa.com

“The Miele steam oven is a multi-tasking appliance my clients adore. There’s a variety of things to use it for, from hard-boiled eggs to cooking rice to making 36 cookies at once. The oven looks small but can hold a ton. Everything you need is on the digital screen so you don’t have to get a cookbook out for directions like other models. My favorite part is that you could leave the house at 7 a.m., and program your chicken to be ready by 7 p.m. Perfect for working moms out there!”

– AMY MORRIS, AMY MORRIS INTERIORS



Kitchen by Frank
Neely Design,
neelydesign.com

“I have always thought of THE HOOD as the place to inject a big WOW FACTOR. We have been drawing kitchens for 20 years now and have NEVER REPEATED a hood design. Each is specifically designed for the kitchen it is in.”

–Frank Neely, architect, Frank Neely Design

“I am super-excited about charging electronic devices through the countertops in kitchens, and the Lutron Grafik dimmers. (I detest outlets, switches and thermostats).”

–Matthew Quinn, Design
Galleria Kitchen & Bath Studio



Lutron's Grafik T (left) and Caseta Wireless (above) dimmers,
lutron.com

“I CAN’T LIVE WITHOUT LA CORNUE’S FLAMBERGE WALL ROTISSERIE, AND I LOVE THAT GROHE BLUE FAUCET THAT DELIVERS CHILLED AND SPARKLING WATER.”

–Matthew Quinn



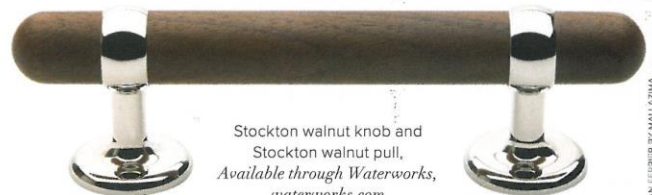
La Cornue's Flamberge wall rotisserie,
lacornueusa.com

STYLE
NEWS

Kitchen by Susan Ferrier,
interior designer, McAlpine,
mcalpinehouse.com



“HARDWARE NEEDS TO FEEL LIKE THE **FINEST AUTOMOBILE**; THE SIMPLEST TASKS LIKE OPENING A DRAWER CAN BE A **SENSUAL EXPERIENCE** IF YOU ARE WORKING WITH A DESIGNER THAT IS **TUNED IN TO THE DETAILS.**”
—Susan Ferrier



Stockton walnut knob and Stockton walnut pull, Available through Waterworks, waterworks.com

SUSAN FERRIER BY MALIZIMA

“Open shelves in kitchens are only for those disciplined enough to keep them clean, neat and organized by theme and color—you know who you are. Open shelves are not for a dirty pile of mismatched hand-me-downs. Open shelves, like every question in a kitchen, are very personal and individualized.”

—Susan Ferrier, McAlpine



Kohler's Sensate touchless faucet, kohler.com

“TOUCH FAUCETS—SO CONVENIENT!”
—Courtney Shearer, Bell kitchen & Bath Studios

STYLE
NEWS



A collaboration between Susan Ferrier, Mary Holland and Beth Barfield Designs

“My favorite way to add custom flair to a kitchen is through unexpected millwork details.”
—Courtney Shearer, Bell Kitchen & Bath Studios

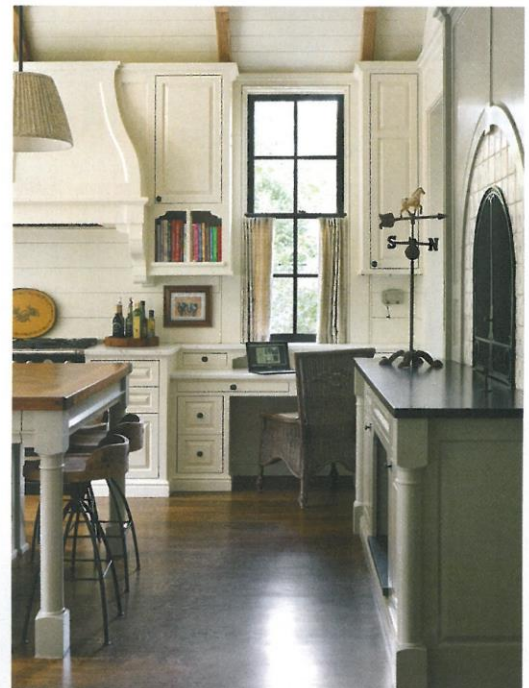


above The 2017 Luxury Living Show kitchen by Bell Kitchen & Bath Studios. below A Frank Neely-designed kitchen, winner of the 2014 Atlanta Homes & Lifestyles Kitchen of the Year award.

“It’s important now for kitchens to be set up LIKE A STAGE; the cook is now the PERFORMER, and the entire experience has become more INTERACTIVE among families and guests. This has moved the kitchen to the CENTER OF THE HOUSE, and for me that means making it feel less like an institutional, purely functional space and more like any other room of the home, with HIGH QUALITY LIGHTING and special details that make the room comfortable and sophisticated.”

—SUSAN FERRIER, MCALPINE

“We have used *PAINTED WOOD* for hoods and Calacatta for counters for years. It is fun to *BREAK THE MOLD* and inject a [patinated] steel, zinc or copper hood. It is also fun to work with wooden counters. I am currently a big fan of *BLEACHED OAK*; it is a beautiful material.” —Frank Neely



SUSAN FERRIER BY ERICA GEORGE DINES, LUXURY LIVING SHOW BY DAVID CHRISTENSEN, FRANK NEELY BY EMILY FOLLOWILL

LIFE
REAL ESTATE

2017 OUTLOOK

WRITTEN BY *Lori Johnston*

LONGER LEAD TIMES, higher materials costs and a subcontractor shortage are expected to continue in the New Year on home renovations. Local architects and designers shared what they're seeing as the calendar turns to 2017.

Mary Kathryn Timoney, senior designer, Design Galleria Kitchen & Bath Studio "So many people are staying put and remodeling right now. There was no summer slowdown for me. There has been no Christmas slowdown. Because [contractors are] so very, very busy, pricing might be higher than it was before. They're more expensive. Their lead times are increasing because of the demand."

Pam Bullock, owner, PSB Studio Architecture "There is definitely a shortage of labor, and of qualified labor. It's a real problem. Carpentry is definitely a problem. You get to where you think is the finish line and then, 'Oh, we're going to wait three more weeks on cabinets.' Three weeks later, we'll wait three more weeks. I do prepare [clients] to be out of their house for longer."



MARY KATHRYN TIMONEY
FOR DESIGN GALLERIA

Ann Wisniewski, principal, AJW Designs, and past president, Georgia chapter of the American Society of Interior Designers (ASID) "In the Atlanta area, there's so much building going on. Contractors are so busy on the job, you may have to wait a month or so before they even start. Some projects that should take six weeks take six months. Product [prices] have gone up; shipping has gone up, even for the basic product, so it's costing [contractors] more. The price of labor has gone up; subcontractors are also wanting more money. We need more laborers that do have technical knowledge behind them."

by the NUMBERS

Georgia commercial and multifamily residential contractors are hiring more—but also seeing shortages in craft positions.

7,800

INCREASE IN METRO ATLANTA CONSTRUCTION JOBS, JULY 2015–JULY 2016

72 %

REPORT HAVING A HARD TIME FILLING SOME HOURLY CRAFT POSITIONS

57 %

REPORT HAVING A HARD TIME FILLING HOURLY CARPENTRY POSITIONS

Source: Associated General Contractors of America 2016 survey

KITCHEN: COURTESY OF DESIGN GALLERIA; TINY HOUSE BY EMILY JENKINS



TINY LUXURY WINS BIG

ATLANTA'S DESIGN COMMUNITY RECENTLY caught the first look at luxury living on a small scale when the **NEOLITH TINY HOUSE** debuted at ADAC in November. The showcase home will be on display in January at the Kitchen & Bath Industry Show in Orlando and then four distributors for Neolith.

Architect Jeffrey Bruce Baker's design for the 500-square-foot home includes two bathrooms with Toto fixtures; a kitchen with custom cabinetry from Bell Kitchen & Bath Studios, Miele appliances and an island; and two sleeping spaces.

"The evolution in the U.S. of the tiny home has not been luxury. So now those elements are getting applied to it and getting a little more sophisticated design," Baker says.

Baker collaborated with Resende Design & Marketing and Stone Center, which used Neolith emulating Calacatta Gold marble for the countertops, flooring, facade and exterior cladding. For the ADAC event, an outdoor entertaining area included Sub-Zero and Wolf appliances.

"Real estate is going up and up, and it's very hard for millennials to have a nice place to live in the city. So the tiny house concept allows us to really be in a space that is going to be luxurious, but yet gives you what you need," says Renata Diniz, president of Stone Center in Norcross.



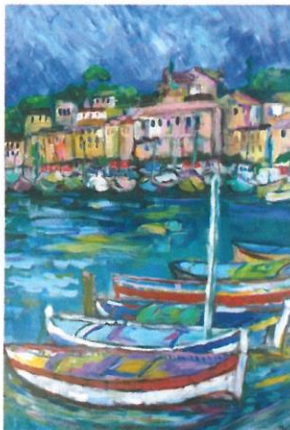
LIFE
CALENDAR



Around Atlanta

An Atlanta design center celebrates 60 years, local galleries debut new works and annual artist markets and festivals return this month.

WRITTEN BY *Lindsey Wohlfrom*



clockwise from top right Callanwolde Arts Festival; Tenley Beazley at Gregg Irby Fine Art; Wanda Ruzicka at Carre d'artistes; Christina Cohn Ceramics at Trinity School's Spotlight on Art Artists Market; Boyd Lewis at the Atlanta History Center.

► *Flashback: Atlanta in the 70s, The Photography of Boyd Lewis* comes to a close this month at the **ATLANTA HISTORY CENTER**. The exhibition, featuring three videos and 60 images captured by Lewis, documents the struggle for civil rights during an era of social and political unrest for African-Americans living in Atlanta. *Through 1/16. atlantahistorycenter.com*

► **AMERICASMART** celebrates 60 years of design during this year's Atlanta International Gift & Home Furnishings Market. In honor of its diamond anniversary, AmericasMart has invited eight designers to create a Diamonds of Design vignette gallery using products sourced from AmericasMart showrooms that showcase their favorite era, design icon or moment from the last 60 years.

The exhibit will be on view through June 2017. To the trade only. *1/10-1/17. americasmart.com*

► Trinity School's **SPOTLIGHT ON ART ARTISTS MARKET** debuts on Jan. 30, featuring more than 350 select artists in 6,000 square feet of gallery space on the school's campus. The six-day juried Artists Market features contemporary, realist, impressionist and folk works, as well as sculpture and jewelry in all price points. Proceeds benefit Trinity School. *Through 2/4. spotlightonart.com*

► **GREGG IRBY GALLERY** welcomes its newest addition, botanical artist Tenley Beazley. The Virginia native, inspired by her childhood in the Colorado mountains, combines various techniques to create layered works, using elements of nature as part of the artistic process.

All month. greggirbygallery.com

► The Atlanta Foundation for Public Spaces presents the **CALLANWOLDE ARTS FESTIVAL**, an indoor festival featuring the works of more than 80 artists, including painters, glass artists, metalworkers, photographers, jewelers and more. Guests will also enjoy live music, artist demonstrations, gourmet food trucks, and music and dance performances. *1/20-1/22. callanwoldearts-festival.com*

► Local artist Wanda Ruzicka showcases her latest works at **CARRE D'ARTISTES** with a meet-and-greet, book signing and live painting demonstration from 6 to 8 p.m. on Jan. 19. Guests are invited to browse her vibrant landscapes depicting the South of France while enjoying light bites and wine. *carredartistesatlanta.com*

LIFE
OUT & ABOUT

THRIFT STUDIO KICKOFF PARTY

Atlanta Homes & Lifestyles joined DWELL WITH DIGNITY's Atlanta chapter to launch the nonprofit's signature fundraiser, **THRIFT STUDIO**, held at ADAC. Preview Party Honorary Chair Suzanne Kasler welcomed guests, who took in vignettes of highly discounted, high-end goods, as curated by Michel Boyd, Bill Peace, Carole Weaks, Robert Brown, Lance Jackson and David Ecton and Niki Papadopoulos of Mark Williams Design.

PHOTOGRAPHY BY KIM LINK



Top Judy Talley, John Oetgen, Suzanne Laurita; Kimberly Sundt, Lauren Hall; Cecil Adams, Keith Arnold, Julie Bowen.

Middle Lori Hojnowski, Pamela Brown, Lauren DeLoach, Elizabeth Ralls; Gary Mann, Katie Miner, Matthew Quinn, Heather Dewberry.

Bottom Suzanne Kasler, Matthew Quinn; Mallory Mathison, Amy Odeneal, Melanie Turner, Michel Boyd; Cathryn Miller, Steve McKenzie, Jill McKenzie.